



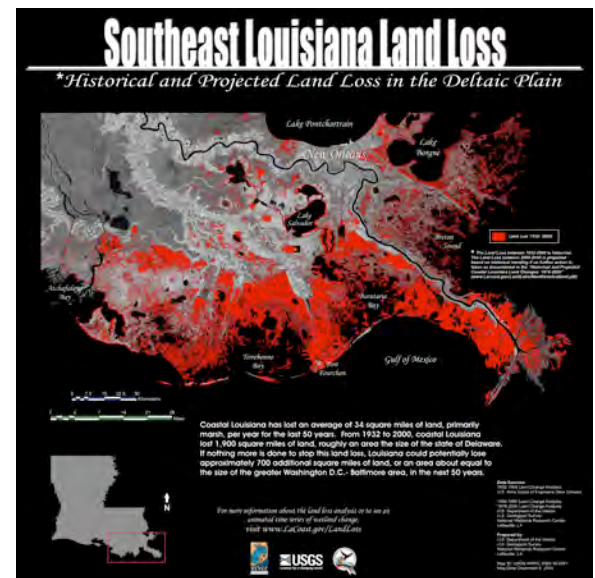
## LOUISIANA FUELS & FEEDS THE NATION...

**\$5 to \$15 Billion** – The range of royalties that the United States Treasury receives annually from oil and gas produced from the Outer Continental Shelf (OCS), second only to IRS revenue. Of this, approximately **two-thirds comes from offshore Louisiana** – of which Louisiana received **virtually nothing** until an OCS revenue-sharing bill was passed and signed into law in December 2006. **The nation's energy security requires long-term immediate investments in the Gulf Coast**, including reauthorization of the Water Resources Development Act (WRDA).

- **1/3 of U.S. oil and gas is produced** off Louisiana's coast and, of the U.S. domestic supply, **70%** crosses our fragile coast on its way to American homes, industries and vehicles.
- **30% of all seafood** consumed in the U.S. comes from the waters of Louisiana.
- **#1 Port** – The Port of New Orleans is the largest by tonnage in the U.S. It handles 56% of the nation's grain shipments. Five of the 15 largest U.S. ports are in Louisiana; tonnage has increased by 4% over pre-Katrina levels.

## ...BUT LOUISIANA IS WASHING AWAY

- **One football field** of land is lost every 50 minutes.
- **Since the 1930s, an area the size of Delaware** – 2,000 square miles of wetlands – has been lost
- **200 square miles of marshland became open water** as a result of Hurricanes Rita and Katrina in Southeast Louisiana.
- **Every 2.7 to 4 miles of lost marsh** correlates to a **one-foot rise in storm surge**.
- **Two million people are now more vulnerable** because wetlands have disappeared.
- **Homeland security is a serious issue when thousands of miles of pipeline become exposed** due to lost marsh.
- **Risking America's Energy Coast is costly.** Estimates show that, in just the three weeks after Hurricanes Katrina & Rita, the nation's economy lost \$9.9 billion in energy-related sales, \$2.9 billion in household earnings, and 77,000 jobs.



**Scientists estimate the window for action is 10 years at most. After that, it will be too late.**